



**DEPARTMENT: COMMUNITY BASED SERVICES**

**PROGRAMME: HUMAN CAPITAL DEVELOPMENT & MINDSET CHANGE**

**PRESENTER**

**TWOOLI YAFESI**

**DCDO**

**DATE: 13<sup>TH</sup> NOV 2024**



# INTRODUCTION

---

Human capital development is implemented by three departments i.e. Health, Education and CBS with Education being the secretariat

This presentation covers key achievements for the previous Financial year, summary of quarter one FY 24/25 performance, challenges and proposed strategies for FY 25/26.

# ACHIEVEMENTS FOR FY 23/24

---

- A total of 8,358 older persons were paid SAGE totalling to 2,507,400,000/=
- 14 Groups of Persons with disability supported with grants for income generation totaling to 68,000,000/=
- 169 savings groups were registered.
- Nine groups of older persons supported with 45, 000,000/= for income generating activities.

# ACHIEVEMENTS FOR FY 23/24 CONT'D

---

- Nine women groups were funded under the UWEP.
- Twenty youth groups under YLP were supported to tune of 106,000,000/=
- Shs 32, 331,100/= has been recovered from UWEP groups and 12,000,000/= form those for YLP.
- Three groups were funded in total shs. 55,000,000/= under the micro projects based in the office of the Prime Minister.
- Twenty five groups were mobilized and linked to the SNV small dairy farmer's project.

# ACHIEVEMENTS FOR FY 23/24 CONT'D

---

- 82 child neglect cases been handled.
- Tooro Kingdom was supported with 200,000/= for Empango Festival.
- Three CSO coordination meetings conducted.
- Four cases conference conducted to handle challenging child abuse cases.
- Men's month activities conducted in June .

# CHALLENGES FOR FY 23/24.

---

- Low recovery of loans from YLP, UWEP and Myooga.
- Increasing number of child abuse case/ violence against children.
- Increasing vulnerability due to economic shocks and climate change.
- Inadequate staff lower local governments.
- Lack of transport for most staff.

# Q1 FY 24/25 KEY ACHIEVEMENTS SUMMARY

---

- 8,358 SAGE beneficiaries being paid for first quarter.
- Women, Youth ,PWD and older persons groups been mobilized for grants/ loans.
- 45 savings groups have been registered.
- 124 child abuse cases been handled.
- 47 adolescent peer educators on HIV been trained from Kigarale, Bufunjo, Nyankwanzi, Kigoyera ,Kisojo, Kyarusenzi , Katoke , Butunduzi and Kyenjojo TCs.

# Q1 FY 24/25 KEY ACHIEVEMENTS CONT'D

---

- 2,588 adolescent girls been targeted by Baylor for skilling.
- Men's summit held to promote male engage in various activities.
- Contribution of 200,000/= made towards Tooro Kingdom coronation anniversary.
- Artisans from to train the adolescent girls been shortlisted for evaluation.
- CSO budget conference to capture off budget support was conducted



# IPF FOR FY 2025/26

---

- District unconditional grant wage UGX 233,927,208
- District Unconditional grant non wage UGX 5000,000
- Other government transfers UGX 40,944,583
- Program conditional grant non wage UGX 95,467,747
- Local revenue UGX 7000,000

# PROPOSED BUDGET STRATEGIES FOR FY 25/26

---

- Linking of vulnerable households to wealth creation programmes
- Train caregivers ,FBOs, cultural leaders, women and men action groups on positive parenting.
- Conduct dialogue meetings together with role model men, schools, FBOs,CSOs and media to campaign against gender based violence, teenage pregnancy, child marriage and school drop out.

# PROPOSED STRATEGIES FOR FY 25/26 CONT'D

---

- Conduct dialogues on dangers of child labour in Sub Counties with high numbers.
- Raise awareness on HIV at places of work and in community.
- Promote activism to address negative cultural practices, gender based violence, increased male engagement, child labour, climate change and malnutrition
- Mobilise youths for skills training.

# PROPOSED STRATEGIES FOR FY 25/26 CONT'D

---

- Conduct workplace inspection.
- Mobilise eligible older persons for cash transfers special grants for older persons and PWD.
- Provide assistive devices to PWD and older persons.
- Conduct quarterly child welfare meetings at district and lower local government levels.
- Link adolescents to reproductive health services and counseling.
- Conduct adult literacy.

# THANK YOU!

————— A Healthy, Productive and Prosperous Population —————



[www.kyenjojo.go.ug](http://www.kyenjojo.go.ug)



REPUBLIC OF UGANDA

**KYENJOJO DISTRICT**

Local Government



[info@kyenjojo.go.ug](mailto:info@kyenjojo.go.ug)



**DEPARTMENT: EDUCATION**

**PROGRAMME: HUMAN CAPITAL DEVELOPMENT**



“A Healthy, Productive and Prosperous Population”

# ACHIEVEMENTS FOR FY 23/24

## Sustained Improved PLE Performance

DIV 1	DIV 2	DIV 3	DIV 4	DIV U	DIV X	TOTAL
1,007	4,888	533	340	125	54	6947

## Sustained Improved UCE Results

DIV 1	DIV 2	DIV 3	DIV 4	DIV U	DIV X	TOTAL
95	335	567	1200	284	34	2518

# ACHIEVEMENTS FOR FY 23/24 CONT'D

---

- Renovated classroom blocks in twenty (20) primary schools including; Kyabaranga, Kitonkya, Mbale, Biheehe, Iraara, Bwahunro, Mwaro, Katunguru, Kigaraale, Mabira, Kitaihuka, Kanyabacope, Ncumbi, Byeya, Katambale, Bigando Nsanja, Nyarukoma, Nyakahaama and Rwempike primary schools.
- Monitored the progress of Kigaraale and Kyarusozi Seed secondary Schools.
- Registered and Completed PLE for the year 2024 where 7000 pupils sat for the just concluded PLE 2024.



# ACHIEVEMENTS FOR FY 23/24 CONT'D

---

- Completed two classroom blocks and supplied 30 three seater desks to Rwebijuza and Rukukuru Primary Schools in Nyabuharwa and Nyakwanzi Sub counties respectively.
- Constructed Four five stance lined VIP latrines in the following primary schools Kyakahyoro in Nyabuharwa S/C, Kicuucu in Rugombe T/C, Kiduudu in Nyantungo S/C and Kihumuro in Kyarusozi T/C

# CHALLENGES

---

- Inadequate staffing levels in primary, and secondary schools including acting positions at District hindering efficient service delivery
- Inadequate latrines and sanitary facilities in schools
- Lack of enough transport means for staff given the fact that all motorcycles have since become old and overworked.
- Delayed and slow progress of projects under UGIFT

# IPF FOR FY 25/26

---

- Program conditional grant wage UGX 13,310,212,864
- Program conditional grant Non wage UGX 3,965,592,660
- OGT UGX 48,000,000
- Program conditional grant development UGX 347,394,161

# PLANNED ACTIVITIES FOR FY 25/26

---

- Fencing of Nyantungo & Kyenjojo primary school playgrounds
- Completion of Kigaraale and Kyarusozi Seed secondary schools.
- Monitor the beginning of term for Primary, Secondary and Tertiary institutions and ensure compliance for the academic year 2025
- Conducting of CPDs for Teachers and trainings of SMCs and PTAs on their roles

# PLANNED ACTIVITIES FOR FY 25/26

---

- To construct a two classroom without office at the following primary schools Nyamabaale in Butunduzi S/C, Kajuma in Kigoyera S/C and Nsanja Bufenjo S/C.
- Supply 36 three seater desks to the above schools
- Construction of five stance lined VIP latrines in the following primary schools; Iraara, Kyakahiiirwa, Rwentaiiki and Buhemba Primary Schools
- Renovation of Classrooms at Kiswarra, Mwaro, Kaburanda, Rwibaale, Makerere, Galihuuma, Kyakayombya, Kaisamba, Kasamba, Kyamutunzi, Rubona, Rubango, Kafunda, Nyankwanzi and Bigando primary schools.

# THANK YOU!

————— A Healthy, Productive and Prosperous Population —————



[www.kyenjojo.go.ug](http://www.kyenjojo.go.ug)



REPUBLIC OF UGANDA

**KYENJOJO DISTRICT**

Local Government



[info@kyenjojo.go.ug](mailto:info@kyenjojo.go.ug)



## DEPARTMENT HEALTH

## PROGRAMME HUMAN CAPITAL DEVELOPMENT



“A Healthy, Productive and Prosperous Population”

# PRESENTATION OUTLINE

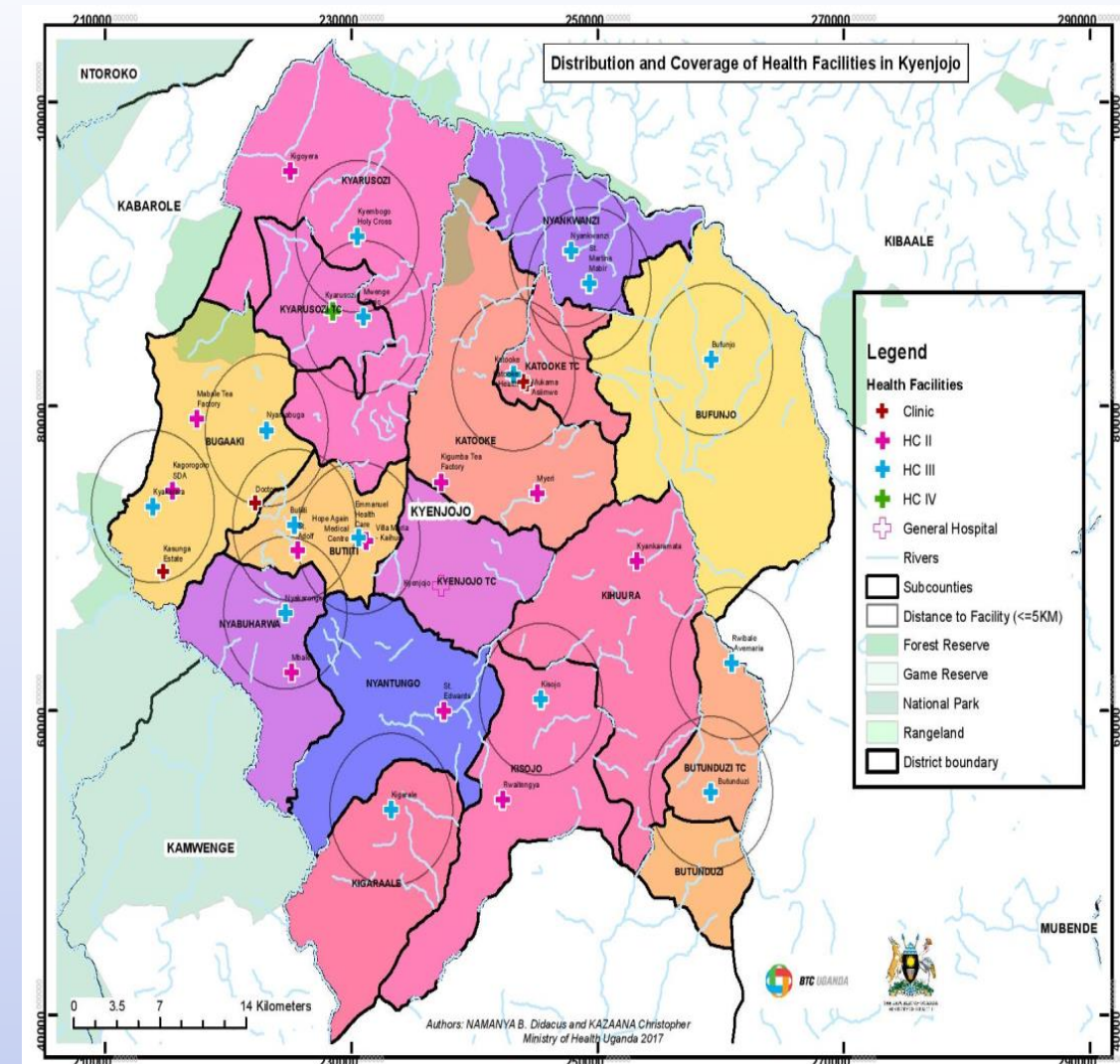
---

- District Demographic Profile
- Key Partners
- Maternal Health Services
- New-born and Child Health Services
- Morbidity and Mortality in U5 years
- Adolescent and RH Services
- HIV/AIDS services
- Human Resources for Health (HRH)
- Health Services Financing
- Leadership and Governance
- Infrastructure



# DISTRICT DEMOGRAPHIC PROFILE

- Located in Rwenzori Region, with a Population of 604,400 (2024-2025).
- Population served by 49 health facilities
- About 34% of the population live beyond 5KMs from the nearest health facility
- Only 48% of the population ready to move at-most 5kms to access health services
- Most of the population is based in Agriculture



# KEY PARTNERS & SUPPORT PROVIDED

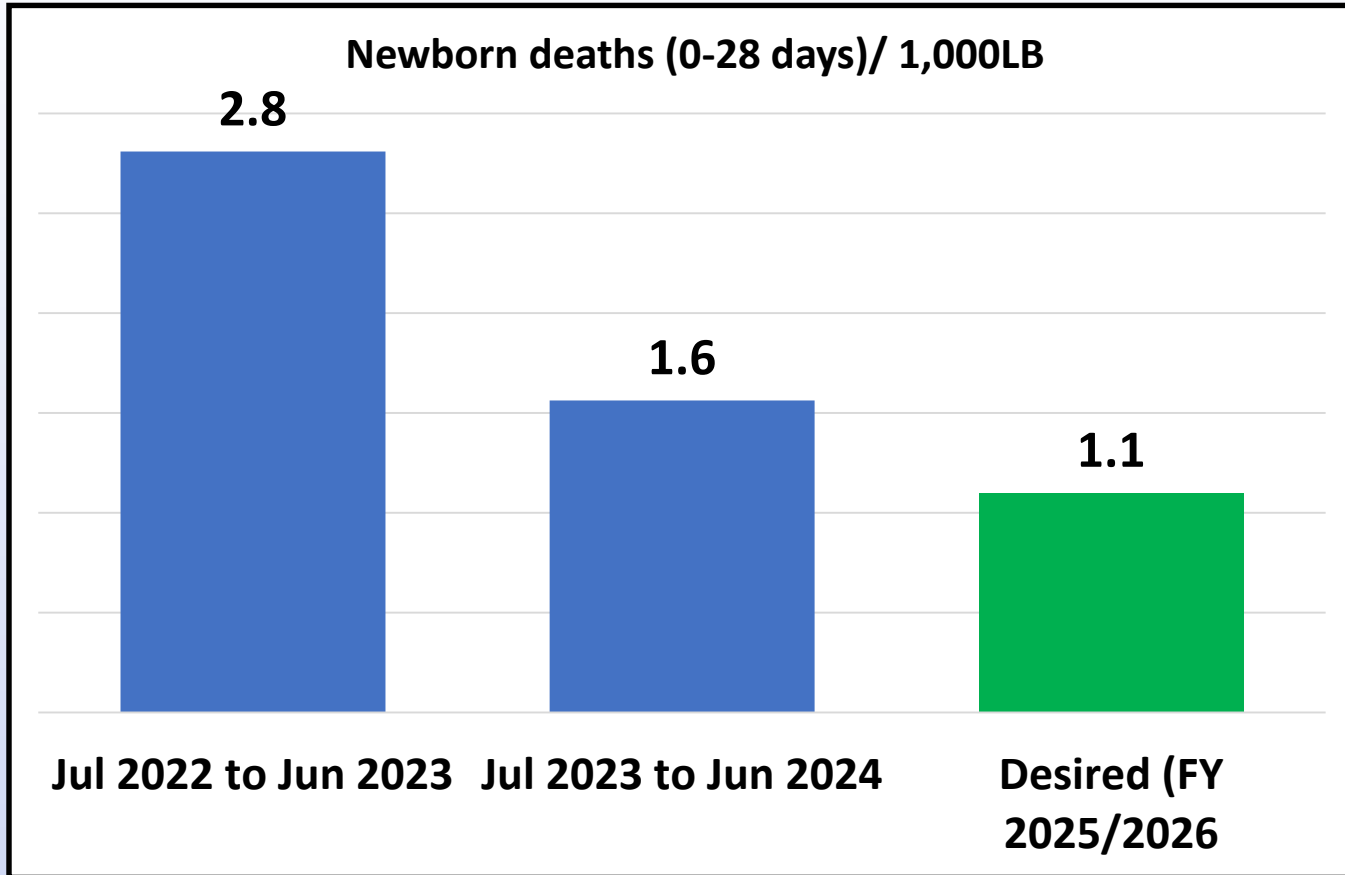
Partners	Area(s) of Support	Geographical Coverage
Baylor Uganda	HIV Services, TB Services, Sub Granting	All Sub Counties
Marie Stopes	Family Planning Outreaches	Public Health Facilities
Uganda FPA	Family Planning Services	Public, PNFPs and Private HFs
RBF Mainstreaming	Infrastructure Dev't, RBF	Public and PNFP HFs
METS	Systems Strengthening	ART Sites
PSI	Family Planning	Designated Private Clinics
Life-net International	Child and maternal health services	Private-not-for profit Health Facilities
Uganda Health Systems Strengthening (PMI)	Malaria prevention and Community support	District-wide

# MATERNAL HEALTH SERVICES

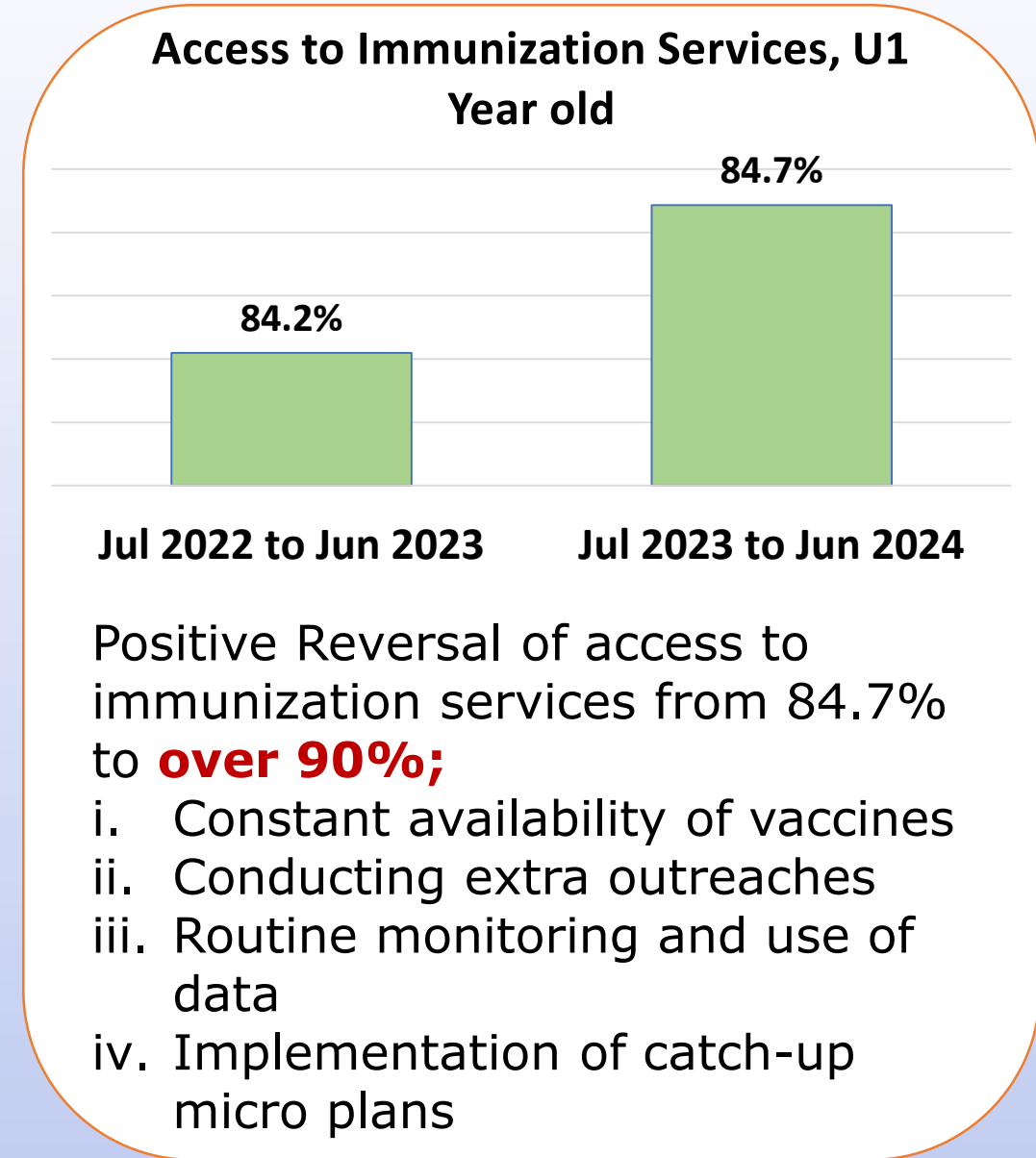
Financial Year	% Pregnant women attending ANC1 in 1st Trimester	% ANC1 mothers screened for anaemia	% Deliveries in Unit	% Postpartum mothers accessing modern FP
FY '22-'23	31.8%	34.7%	62.1%	66.4%
FY '23-'24	29.3%	23.6%	62.2%	65.8%
Target for 2025/2026	40%	45%	70%	80%

**Maternal Health Efforts will focus on: Early Antenatal Care attendances for pregnant women, screening all pregnant women for anaemia and provision of post-partum contraceptives**

# NEWBORN & CHILD HEALTH SERVICES

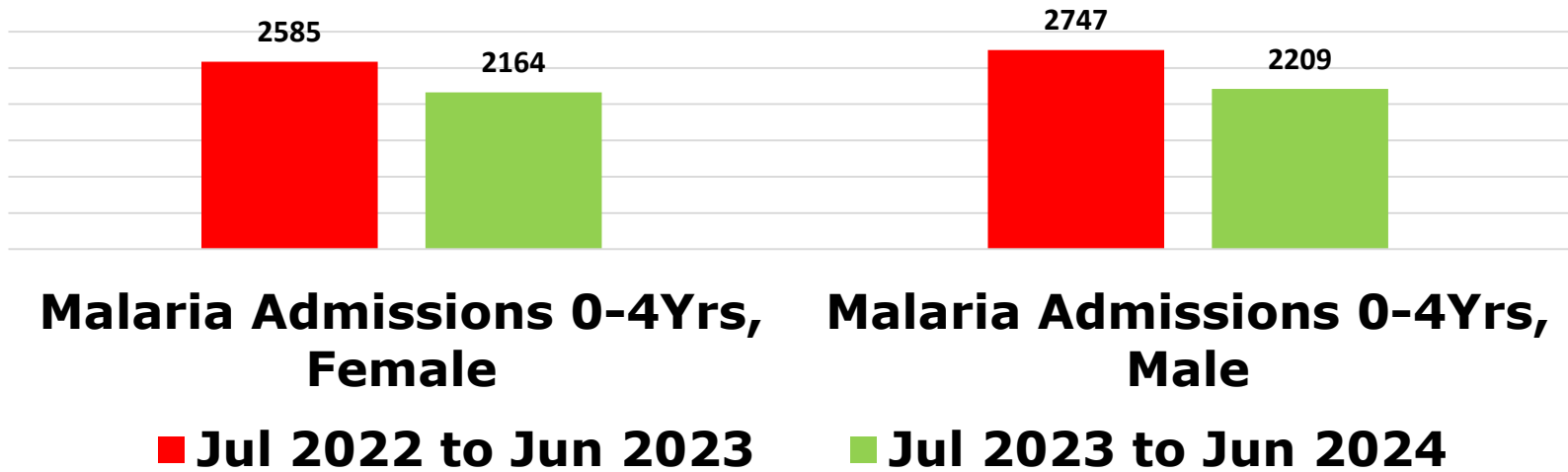


Early referral of pre-matures and under weight babies to NICU, deployment of more specialized staff in NICU, supportive supervision and Implementation of CQI projects



# MORBIDITY & MORTALITY PREVENTION

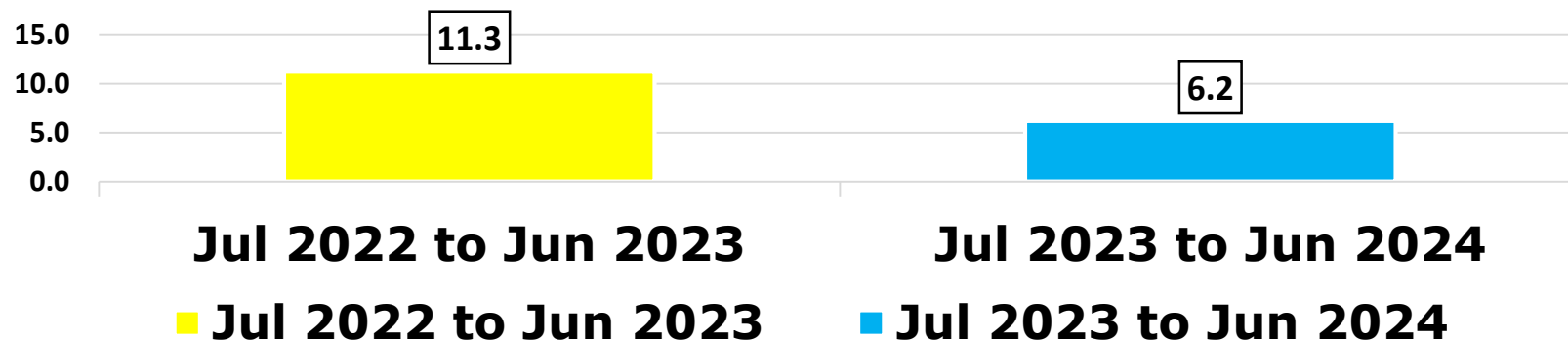
## Numbers of Malaria Admissions, 2 FYs



## Prevention and Management of Malaria in U5 Years old:

- LLINs distribution to Pregnant women and children U 1 year
- Health education sessions on malaria prevention
- Early health seeking behaviour sensitizations
- Availability of diagnostics and treatment services

## Malaria Fatality Rates/ 1,000 Admissions, 2 FYs (0-4 Years)



# ADOLESCENT & REPRODUCTIVE HEALTH

10.2% of the population are Girls aged 15-24 Years;  
During the past 2 FYs,

- 34.8% accessed modern contraceptives in FY 2022/2023
- 36.6% accessed modern contraceptives in FY 2023/2024.
- **Address stock-outs and access to contraceptives to the high-risk female popn. aged 15-24 years**






Un-intended pregnancies still remain higher than acceptable levels in Adolescents aged 15-24 years at average of 54.9%:

- **15-19 Years at 62.9%**
- **20-24 years at 46.9%**

And yet of the girls aged 15- 19 years, 53.2% are already sexually active- this is high risk female population

***MakSPH 2022 Survey (Rwenzori)***

# HIV/AIDS-CHILDREN & ADOLESCENTS

Period/ Element	HIV+ Rate 0-4 years	HIV+ Rate 5-9 years	HIV+ Rate 10- 14 years	HIV+ Rate 15- 19 years	HIV+ Rate 20- 24 years
Jul 2022 to Jun 2023	1.3%	2.2%	5.3%	1.6%	2.2%
Jul 2023 to Jun 2024	 0.8%	 0.8%	 2.1%	 1.2%	 1.5%

- Sexuality Education remains very key to the those aged 5-19 years that are continually having peaks in new HIV infections, most especially the girls.
- Adherence to treatment services
- Pre-and Post-HIV exposure services shall be improved
- Safe medical male circumcision camps for the male population

# HEALTH FINANCING FOR FY 2024/2025

## • Revenue and Expenditure Reviews

Funding Source	Planned in '000	Achieved in '000
Wage	9,937,251	2,253,384
Non-Wage Recurrent	2,004,263	496,941
Partners/ Donor	1,122,636	28,375
Local Revenue	0	0
Capital Development	624,730	156,183

**District has continued to grapple with wage shortfall for Health Workers where 3-4% of them go without salary every last month of the Quarter**



# **LEADERSHIP & GOVERNANCE**

---

- Coordination activities with MoH & Ips
- Ensuring quality services are provided to the population
- Continued supportive supervision to the health services providers
- Dissemination of existing and new policies

# ACHIEVEMENTS FOR FY 23/24

---

- Lined VIP at Nyankwanzi
- Staff quarters at Butunduzi
- Staff quarters at Bufunjo HC III
- 4 stance VIP latrine, placenta pit, medical waste pit at Myeri HC III
- 4 stance VIP latrine, placenta pit, medical waste pit at Kyankaramata III
- Lined VIP latrine at Butunduzi HC III

# PLANNED ACTIVITIES FOR FY 24/25

---

- OPD, staff quarter, fencing, 2 stance VIP lined latrine Nyantungo
- Procurement of medical equipment for Mbale HCIII, Kyankaramata, Myeri
- Upgrading of Bufunjo HCIII with Maternity Ward and Staff Units
- Construction of Kisojo HCIII OPD Phase1
- Construction of Nyamabuga HCIII OPD Ward, Staff Units and Maternity Ward
- Staff quarter, Art clinic, general store, stone pitching, paving and incinerated.
- Butunduzi staff quarters 3 stance VIP latrine

# IPF FOR 2025/2026

---

- Program conditional grant wage UGX 10,173,062,165
- Program conditional grant Development UGX 194,633,448
- Donor funding UGX 1,122,636,879

# **PLANNED ACTIVITIES FOR FY 25/26**

---

## **Kyenjojo Hospital**

- Procurement of additional land
- Construction of surgical ward
- Construction of medical store
- Construction of perimeter wall
- Construction of Mortuary
- Paving of the compound

## **District Health Office**

Renovation of DHO (Structure, sanitary facilities, water tank, septic tank)

# PLANNED ACTIVITIES FOR FY 25/26

---

## Lower level facilities

- Up grading of Bufunjo HC III-HC IV (Theatre, maternity, Doctors' house, Medical waste pit and incinerator)
- Maternity ward in Kigaraale and Katooke
- Out Patient Department in Kisojo
- Fencing of Rwaitengya, complete fencing of Nyakarongo, Mbale.
- Construction of HC III in Kitega, Kanyegaramire and Batalika SCs.

# ACKNOWLEDGEMENT

---

To all who contribute toward improved health services delivery:

- ✓ Ministry of Health
- ✓ District Leadership
- ✓ Implementing Partners
- ✓ Kyenjojo District Staff
- ✓ Civil Society Organizations
- ✓ District Population

# THANK YOU!

————— A Healthy, Productive and Prosperous Population —————

 [www.kyenjojo.go.ug](http://www.kyenjojo.go.ug)



 [info@kyenjojo.go.ug](mailto:info@kyenjojo.go.ug)